



The AASHTOWare Project Estimation™ module is a web-based cradle-to-grave estimation application designed to deliver accurate, reliable estimates for your construction program. Regardless of the method of estimation you choose, the AASHTOWare Project Estimation software will meet your needs.

This module is an integral part of the web-based AASHTOWare Project™ software suite. The flexibility and data access provided by web-based software allow for additional features that increase the accuracy of your estimates. For instance, the system includes dynamic bid history profile functionality, eliminating the need to retrieve data from external applications, and granting control and flexibility to the estimator. The estimator can exercise full judgment and control over the pricing parameters and make changes on the fly, even on an item-by-item basis, if desired. The ability to set profiles to utilize rolling date ranges ensures that an agency can always generate historical prices from the most recent and appropriate set of data available in the application, eliminating the need for intervention by a system administrator.

The AASHTOWare Project Estimation module creates a well-defined audit trail, allowing your agency to carefully monitor scope and budget over the entire lifespan of a highway improvement. A single point of entry for all cost estimates promotes a streamlined workflow for the cost estimate, eliminating the need for internal hand-offs that can lead to inconsistencies and scope creep.

The AASHTOWare Project Estimation module supports the following price derivation methods:

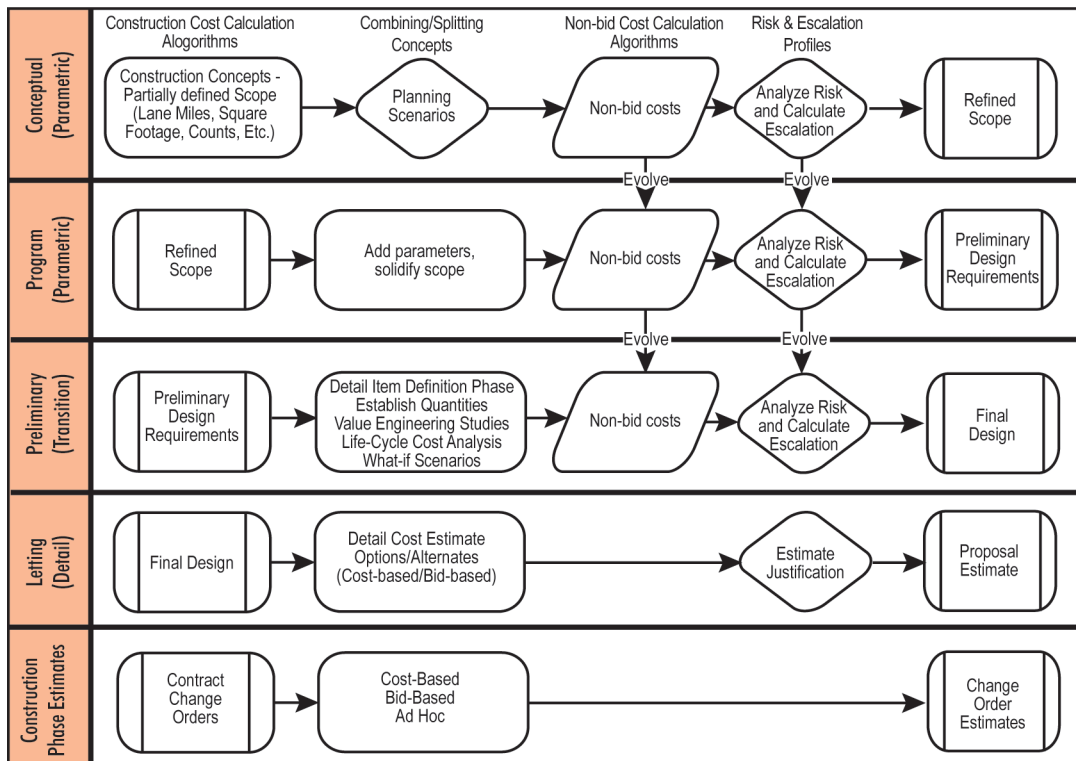
- Bid-based — provides actual historical bid data
- Cost-based — builds estimated prices based on projected equipment, labor, and material costs, including appropriate markups and overhead costs
- Reference-based — populates cost estimate item prices based on prices stored in reference items
- Parametric estimation — uses pre-engineered model parameters and construction criteria
- Ad hoc pricing — based on the estimator's personal experience
- Collection-based — allows grouping a collection of pricing tasks together for various pricing methodologies
- Formula Based - can be used to apply conditional statements and functions using data within the cost estimate to calculate quantities and unit prices

The Project Estimation™ software supports total cost estimation, including the assessment and assignment of risk contingency, life cycle analysis tools, expansion of existing import/export capabilities, the ability to utilize snapshots to create an audit trail for the agency's estimates, and the inclusion of non-bid costs, non-construction costs, and markups. An interactive graphical display is available for bid-based pricing, allowing the estimator or analyst to quickly discern the impact of modifications to parameters or criteria.

Outside the confines of the cost estimate, executive managers have the ability to run a quick analysis of bid-history pricing that can be utilized in what-if scenarios and planning discussions. They can view those results in a variety of interactive graphical outputs, leveraging point-and-click data access.

Cradle-to-Grave Estimating

The diagram below depicts how an estimate evolves over time so there is no redundant data entry.



The AASHTOWare Project Estimation module provides a flexible user interface and extensive configuration options:

- Any user, with proper access, can attach files/URL links and add agency fields to any record in the system.
- System events and issue tracking enable an agency to automate complex processes and workflows that might require input or review from several different users.
- Thorough online help is available throughout the application, including configurable tool tips.

System Specifications

For details about system specifications for all AASHTOWare Project™ products, please refer to <https://aashtowareproject.org/apr-sys-arch>

For more information about this product, contact AASHTO or the AASHTOWare® contractor:



444 North Capitol Street
N.W., Suite 249
Washington, DC 20001
(202) 624-5821
kplatte@aashto.org
www.aashtoware.org



2970 SW 50th Terrace
Gainesville, FL 32608
Phone (352) 381-4400
info@aashtowareproject.org
www.cloverleaf.net